



## Space

39,601 Sq Ft (6,897 sq ft raised; 26,264 sq ft non-raised)  
42U APC AR3100 Cabinets  
Free WiFi



## Connectivity

Carriers Available: Cogent, Verizon, Sunesys, Fibertech  
Port Sizes up to 100GE  
Wave Enabled



## Security

Card Reader Access System  
Cameras monitoring and recording 24/7  
Gated Facility



## Environment

VESDA Xtralis  
Clean Agent Zones Suppression Systems  
Multiple HVAC Chillers  
Multiple Air Handling Units



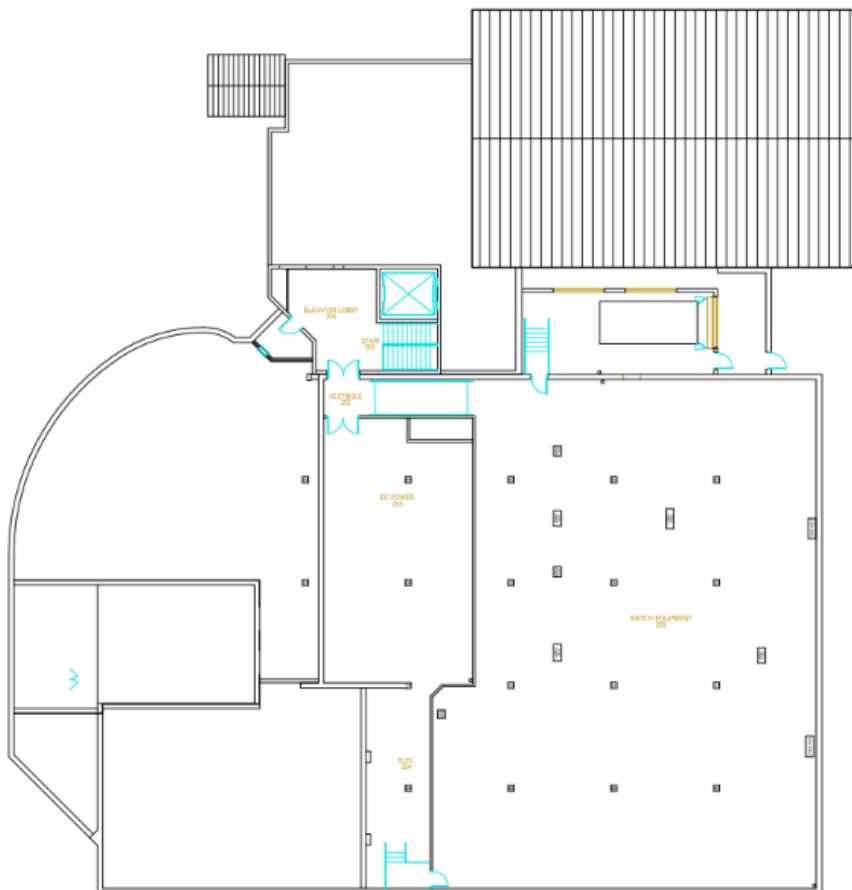
## Power

One 500kVA UPS Unit  
Two 80kVA UPS Units (expandable to 120kVA) with a string of East Penn AVR95-9 batteries  
Multiple PDUs for distribution (ranging from 75KVA to 120KVA)  
Two 1250kW Diesel Powered Standby Generators with 2000amp ATS

**See Back for Floor Plan**



**First Floor**



**Second Floor**